

Executive Flyers Aviation encourages you to fly friendly and respect our neighbors. In keeping with this philosophy, please observe the following guidelines:

- When leaving the airport, fly outbound at 3,000 ft. MSL when practicable.
- When returning to the field, fly between 1,500 and 2,500 ft. MSL.
- Practice Ground Reference Maneuvers no lower than 1,000 ft. AGL and never in a noise sensitive area.

Winter 2003

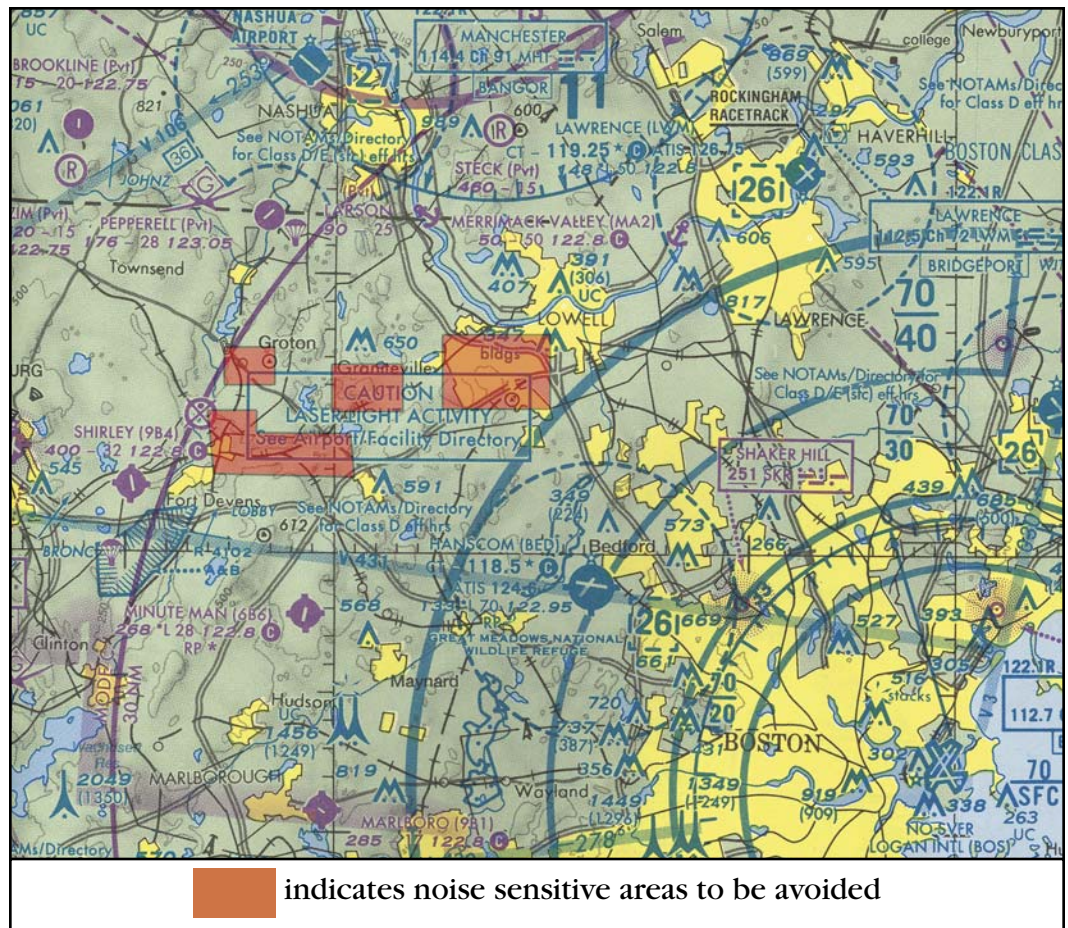
In addition, EFA requests that you follow AOPA's "Fly Friendly" guidelines\* listed below.

### Recommended Arrival Procedures

1. Straight-in approaches **maintain at least** 1,500 ft. MSL until intercepting the VASI/PAPI glide path.
2. VFR aircraft **maintain at least** 1,500 ft. MSL until 3 miles from the airport.
3. On final approach, **stay on or above** the VASI/PAPI glide path until crossing over the airport threshold.
4. Set the propeller to high RPM **on short final**, after making your final power setting.
5. When practicing touch and go's, touch down within 1,000 ft. of the runway threshold.

### Recommended Departure Procedures

1. **Use the full length** of the runway for departures, avoiding intersection takeoffs.
2. After lift-off, climb out at the **best rate-of-climb** airspeed ( $V_y$ ).
3. Set propeller to the "cruise climb" power setting **before** reaching the airport boundary. **Avoid** flying over residential areas with the propeller set to high RPM.
4. When departing the pattern, unless otherwise instructed by ATC, maintain runway heading to 1,000 ft. MSL before turning on course.
5. When staying in the traffic pattern, unless otherwise instructed by ATC:
  - climb straight ahead to 500 ft. AGL before turning crosswind.
  - maintain your a traffic pattern altitude as close to the runway as possible.
  - stay at pattern altitude as long as practical.
  - avoid extending your pattern over residential areas.



\* Please ask Customer Service for a handy reference card outlining these procedures.